



# GV-Joystick V3

<b>1. Introduction .....</b>	<b>2</b>
<b>1.1 Compatible Products .....</b>	<b>2</b>
<b>1.2 System Requirements .....</b>	<b>2</b>
<b>2. Overview .....</b>	<b>3</b>
<b>3. Starting GV-Joystick.....</b>	<b>4</b>



## 1. Introduction

GV-Joystick V3 is a plug-and-play device for panning, tilting, zooming, and focusing a PTZ camera. It is compatible not only with GeoVision software, but also with any third-party software that supports the HID standard.

### 1.1 Compatible Products

- GV-VMS V17.4.8 / V18.3.5 or later
- GV-NVR V8.9.1A or later
- GV-Control Center V4.2.1 or later
- GV-Center V2 V18.4.1 or later
- GV-Edge Recording Manager (Windows version) V2.3.0 or later
- GV-SNVR: GV-SNVR0412 (FW V1.24 or later) / GV-SNVR0812 (FW V1.27 or later)

### 1.2 System Requirements

OS Supported	Windows 11 / 10 / 7 / Server 2016 / Server 2019
--------------	---

**Note:** The joystick is a HID device compatible with any third-party software supported HID protocol.



## 2. Overview

The default settings for buttons 1-8 are described below. The functionalities can be customized using the Keyboard and Joystick controller. For details, see 3. *Starting GV-Joystick*.

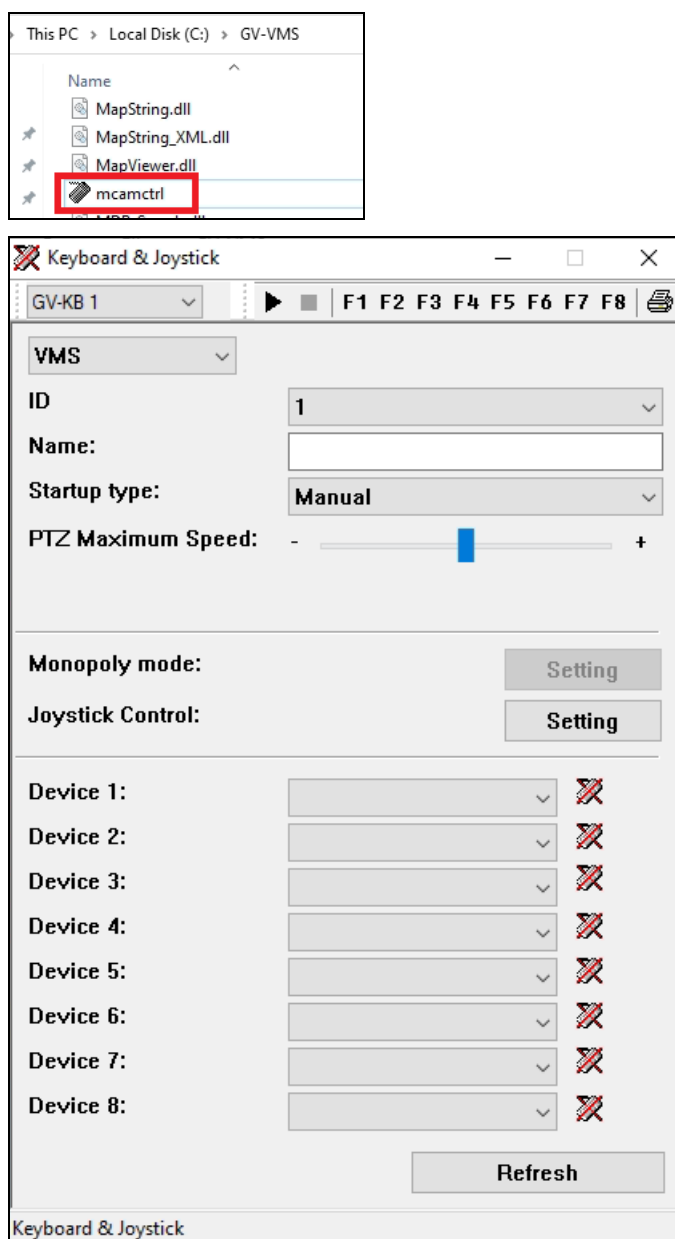
	<table border="1"> <thead> <tr> <th>Button</th><th>Function</th></tr> </thead> <tbody> <tr> <td>1</td><td>Focus in</td></tr> <tr> <td>2</td><td>Previous CH</td></tr> <tr> <td>3</td><td>Focus Out</td></tr> <tr> <td>4</td><td>Next CH</td></tr> <tr> <td>5</td><td>Auto Focus</td></tr> <tr> <td>6</td><td>Home</td></tr> <tr> <td>7</td><td>N/A</td></tr> <tr> <td>8</td><td>N/A</td></tr> </tbody> </table>	Button	Function	1	Focus in	2	Previous CH	3	Focus Out	4	Next CH	5	Auto Focus	6	Home	7	N/A	8	N/A
Button	Function																		
1	Focus in																		
2	Previous CH																		
3	Focus Out																		
4	Next CH																		
5	Auto Focus																		
6	Home																		
7	N/A																		
8	N/A																		



### 3. Starting GV-Joystick

When using GV-Joystick V3 with GeoVision software, the **GV-Mcamctrl Utility** must be running in the background. You can connect up to **8 GV-Joystick V3 units** simultaneously; however, **only one joystick can control a PTZ camera at a time**.

1. Run **mcamctrl.exe** from the GV-Software folder. The Keyboard & Joystick controller appears.



*The Keyboard & Joystick controller*



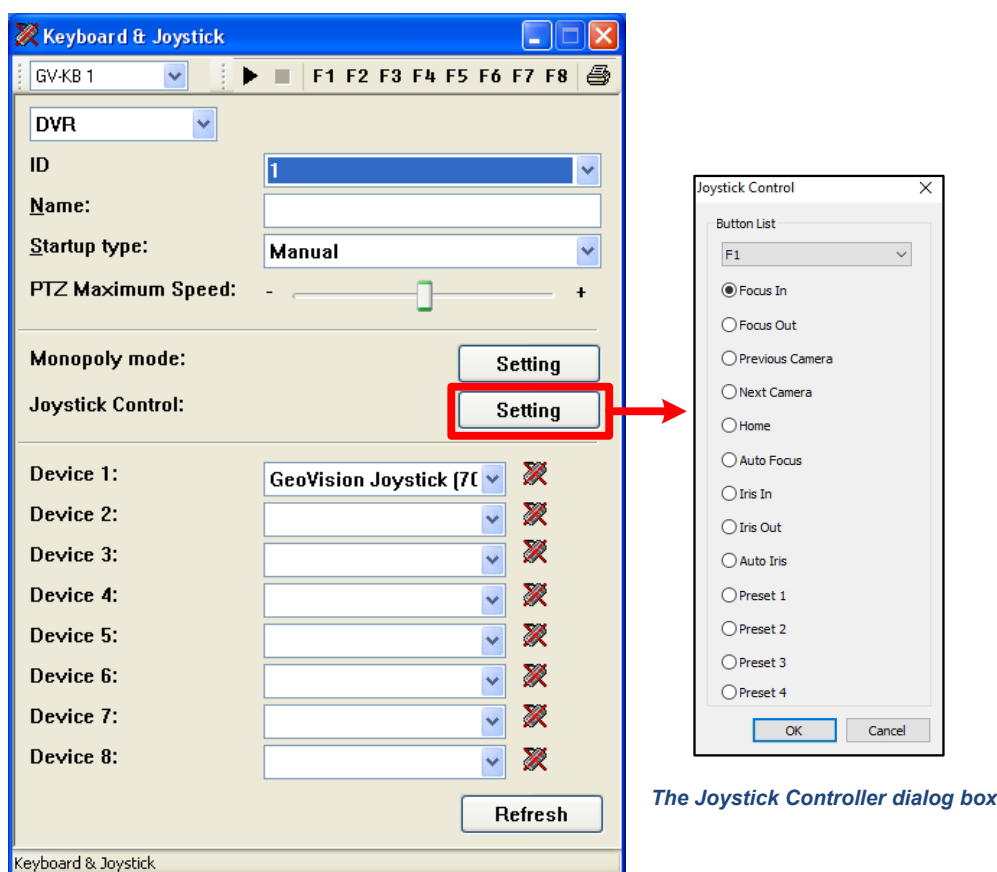
2. Select **GeoVision Joystick** from any of the Device dropdown lists.

---

**Tip:** If you cannot find the **GeoVision Joystick** option, make sure your GV-Joystick is properly connected and then click the **Refresh** button from the Keyboard & Joystick controller to scan for the device again.

---

3. Select the ID of the joystick and name it.
4. For **Startup Type**, select **Manual** or **Automatic** to run the Keyboard & Joystick controller manually or automatically at next startup.
5. To adjust the PTZ speed, use the **PTZ Maximum Speed** slider.
6. To customize the button functions:
  - A. Click the **Setting** button next to **Joystick Control**. The Joystick Controller dialog box appears.



- B. Select a button (F1 ~ F8) from the list, and assign a function.



7. To add another GV-Joystick V3, repeat Step 2 and select **GeoVision Joystick** with a different serial number from the Device dropdown list.
8. Click the **Start Service** button ► to start the service. If you want to stop the service, click the **Stop Service** button ■.

---

**Note:**

1. If you add or remove a GV-Joystick V3, the corresponding COM port in Windows may change. In this case, click the **Refresh** button and check the GV-Joystick V3 assigned in the Device dropdown list.
  2. The serial number is randomly generated by Windows and may change if GV-Joystick V3 is re-installed.
-